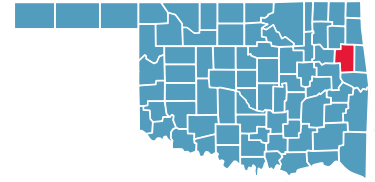


# CHEROKEE COUNTY

County Seat: **Talequah**



Number of Children (2005): **10,601**

Number of Poor Children (2004): **2,742**

Children are **23.7%** of the county population

Child Poverty Rate: **26.1%**

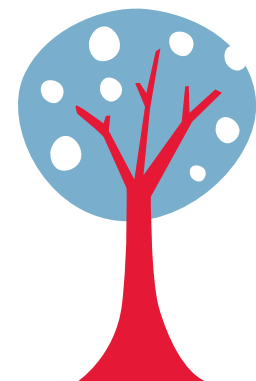
Economic Cluster: **#5, Poorest**

Indicator	Base Data	-	Worsened	Improved	+	Recent Data	Rank
<b>BIRTHWEIGHT</b>							
Low Birthweight (<5.5lbs)	6.8% of live births, 1994-96	-3.9%				7.0% of live births, 2003-05	26
Very Low Birthweight (<3 lbs, 5oz)	0.9% of live births, 1994-96	-8.5%				1.0% of live births, 2003-05	30
<b>BIRTHS TO TEENS</b>							
Births to Young Teens (ages 15-17)	44.0/1,000 girls 15-17, 1994-96				23.9%	33.5/1,000 girls 15-17, 2003-05	56
Births to Older Teens (ages 18-19)	103.6/1,000 girls 18-19, 1994-96				35.6%	66.7/1,000 girls 18-19, 2003-05	15
Births to Teens (ages 15-19)	70.0/1,000 girls 15-19, 1994-96				26.4%	51.5/1,000 girls 15-19, 2003-05	29
<b>CHILD ABUSE &amp; NEGLECT</b>							
	14.4 confirmed/1,000 children, FY 1995-97	-44.8%				20.9 confirmed/1,000 children, FY 2004-06	54
<b>HIGH SCHOOL DROPOUTS</b>							
	3.5% youth <age 19, SY 2001/02-2003/04	-3.8%				3.6% youth <age 19, SY 2003/04-2005/06	63
<b>VIOLENT CRIME ARRESTS</b>							
	182.0/100,000 youths 10-17, 1994-96				77.6%	40.8/100,000 youths 10-17, 2003-05	12
<b>MORTALITY</b>							
Infant Mortality (<age 1)	5.6/1,000 live births, 1994-96	-80.9%				10.2/1,000 live births, 2003-05	62
Child Death (ages 1-14)	43.1/100,000 children 1-14, 1994-96				34.3%	28.3/100,000 children 1-14, 2003-05	37
Teen Death (ages 15-19)	32.7/100,000 teens 15-19, 1994-96	-83.7%				60.1/100,000 teens 15-19, 2003-05	19
Child & Teen Death (ages 1-19)	40.2/100,000 youth 1-19, 1994-96				4.2%	38.5/100,000 youth 1-19, 2003-05	24
<b>ECONOMIC CLUSTER</b>							
	243 Economic Index, 1994-96				22.6%	188 Economic Index, 2003-05	49

■ state change    ■ county change    ### = zero base - cannot calculate change    County Rank (1 = best) (77 = worst)  
 Changes of more than 100%—positive or negative—are graphed with broken bar    \*Indicates a tie with at least one other county.

## CHILDHOOD STRESS INDEX

Category / Indicator	Number	Rate	Rank
<b>BIRTH / GENETIC / BIOLOGICAL</b>			
Very Low Birthweight (2003-05)	6 avg annual	1.0%	30
Autism Reported on IEPs (ages 3-21, FFY 2005-07)	29 avg annual	2.3/1,000	69
<b>ENVIRONMENTAL FACTORS</b>			
Poverty (ages 0-17, 2004)	2,742	26.1%	63*
Unemployment (2003-05)	n/a	4.7%	37*
<b>EXPOSURE TO TRAUMA</b>			
FEMA Disaster Declarations (Nov 2000-Aug 2007)	7	1.5/1,000 children	63
Adverse Childhood Experiences (ACE Index, 2006/07 Kids Count)	47.9	n/a	64
<b>ACCESS TO TREATMENT</b>			
Untreated by DMHSAS, OJA or Medicaid (ages 9-17, FY 2005-06)			
Untreated Mentally Ill & Substance-Abusers	634 avg annual	57.3%	35
Untreated Serious Emotional Disturbance	225 avg annual	32.6%	
Suicide (ages 5-24, 2003-05)	2 avg annual	13.5/100,000	68



Childhood Stress Rank

**74**

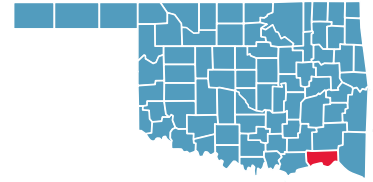
\*Indicates a tie with at least one other county.

0.0%\* or 0\* indicates that, on average, services were provided to numbers of young clients which appear to serve all of the estimated need (prevalence) in the county



# CHOCTAW COUNTY

County Seat: **Hugo**



Number of Children (2005): **3,693**

Number of Poor Children (2004): **1,156**

Children are **24.1%** of the county population

Child Poverty Rate: **31.5%**

Economic Cluster: **#5, Poorest**

Indicator	Base Data	-	Worsened	Improved	+	Recent Data	Rank
<b>BIRTHWEIGHT</b>							
Low Birthweight (<5.5lbs)	8.8% of live births, 1994-96					20.1%	7.0% of live births, 2003-05 <b>22</b>
Very Low Birthweight (<3 lbs, 5oz)	1.1% of live births, 1994-96	-41.8%					1.5% of live births, 2003-05 <b>60</b>
<b>BIRTHS TO TEENS</b>							
Births to Young Teens (ages 15-17)	46.1/1,000 girls 15-17, 1994-96					20.0%	36.9/1,000 girls 15-17, 2003-05 <b>63</b>
Births to Older Teens (ages 18-19)	155.5/1,000 girls 18-19, 1994-96	-7.5%					167.2/1,000 girls 18-19, 2003-05 <b>76</b>
Births to Teens (ages 15-19)	82.6/1,000 girls 15-19, 1994-96	-3.3%					85.3/1,000 girls 15-19, 2003-05 <b>76</b>
<b>CHILD ABUSE &amp; NEGLECT</b>							
	12.9 confirmed/1,000 children, FY 1995-97	-62.2%					20.9 confirmed/1,000 children, FY 2004-06 <b>53</b>
<b>HIGH SCHOOL DROPOUTS</b>							
	3.1% youth <age 19, SY 2001/02-2003/04					18.2%	2.6% youth <age 19, SY 2003/04-2005/06 <b>38</b>
<b>VIOLENT CRIME ARRESTS</b>							
	194.6/100,000 youths 10-17, 1994-96					71.1%	56.2/100,000 youths 10-17, 2003-05 <b>15</b>
<b>MORTALITY</b>							
Infant Mortality (<age 1)	5.4/1,000 live births, 1994-96	-98.5%					10.7/1,000 live births, 2003-05 <b>63</b>
Child Death (ages 1-14)	71.7/100,000 children 1-14, 1994-96					19.6%	57.7/100,000 children 1-14, 2003-05 <b>69</b>
Teen Death (ages 15-19)	56.6/100,000 teens 15-19, 1994-96	-59.4%					90.3/100,000 teens 15-19, 2003-05 <b>40</b>
Child & Teen Death (ages 1-19)	67.7/100,000 youth 1-19, 1994-96					1.4%	66.7/100,000 youth 1-19, 2003-05 <b>62</b>
<b>ECONOMIC CLUSTER</b>							
	298 Economic Index, 1994-96					3.0%	289 Economic Index, 2003-05 <b>75</b>

■ state change

■ county change

### = zero base - cannot calculate change

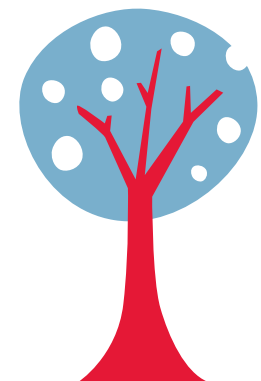
County Rank (1 = best) (77 = worst)

Changes of more than 100%—positive or negative—are graphed with broken bar

\*Indicates a tie with at least one other county.

## CHILDHOOD STRESS INDEX

Category / Indicator	Number	Rate	Rank
<b>BIRTH / GENETIC / BIOLOGICAL</b>			
Very Low Birthweight (2003-05)	3 avg annual	1.5%	60
Autism Reported on IEPs (ages 3-21, FFY 2005-07)	5 avg annual	1.3/1,000	29
<b>ENVIRONMENTAL FACTORS</b>			
Poverty (ages 0-17, 2004)	1,156	31.5%	77
Unemployment (2003-05)	n/a	7.3%	70
<b>EXPOSURE TO TRAUMA</b>			
FEMA Disaster Declarations (Nov 2000-Aug 2007)	7	0.5/1,000 children	34
Adverse Childhood Experiences (ACE Index, 2006/07 Kids Count)	58.1	n/a	75
<b>ACCESS TO TREATMENT</b>			
Untreated by DMHSAS, OJA or Medicaid (ages 9-17, FY 2005-06)			
Untreated Mentally Ill & Substance-Abusers	124 avg annual	31.1%	7
Untreated Serious Emotional Disturbance	0.0* avg annual	0.0%*	
Suicide (ages 5-24, 2003-05)	0 avg annual	8.2/100,000	50



Childhood Stress Rank

**54**

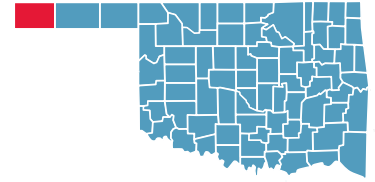
\*Indicates a tie with at least one other county.

0.0%\* or 0\* indicates that, on average, services were provided to numbers of young clients which appear to serve all of the estimated need (prevalence) in the county



# CIMARRON COUNTY

County Seat: **Boise City**



Number of Children (2005): **702**

Number of Poor Children (2004): **134**

Children are **24.8%** of the county population

Child Poverty Rate: **19.0%**

Economic Cluster: **#2, Wealthier**

Indicator	Base Data	-	Worsened	Improved	+	Recent Data	Rank	
<b>BIRTHWEIGHT</b>								
Low Birthweight (<5.5lbs)	9.5% of live births, 1994-96					64.4%	3.4% of live births, 2003-05	2
Very Low Birthweight (<3 lbs, 5oz)	1.1% of live births, 1994-96					100.0%	0.0% of live births, 2003-05	1*
<b>BIRTHS TO TEENS</b>								
Births to Young Teens (ages 15-17)	29.3/1,000 girls 15-17, 1994-96					55.1%	13.2/1,000 girls 15-17, 2003-05	5
Births to Older Teens (ages 18-19)	102.0/1,000 girls 18-19, 1994-96					16.9%	84.7/1,000 girls 18-19, 2003-05	24
Births to Teens (ages 15-19)	50.4/1,000 girls 15-19, 1994-96					25.5%	37.6/1,000 girls 15-19, 2003-05	15
<b>CHILD ABUSE &amp; NEGLECT</b>								
	9.0 confirmed/1,000 children, FY 1995-97					20.8%	7.1 confirmed/1,000 children, FY 2004-06	2
<b>HIGH SCHOOL DROPOUTS</b>								
	0.9% youth <age 19, SY 2001/02-2003/04					56.8%	0.4% youth <age 19, SY 2003/04-2005/06	1
<b>VIOLENT CRIME ARRESTS</b>								
	82.1/100,000 youths 10-17, 1994-96	-127.3%					186.7/100,000 youths 10-17, 2003-05	61
<b>MORTALITY</b>								
Infant Mortality (<age 1)	10.5/1,000 live births, 1994-96	-6.7%					11.2/1,000 live births, 2003-05	65
Child Death (ages 1-14)	0.0/100,000 children 1-14, 1994-96					###	121.2/100,000 children 1-14, 2003-05	75
Teen Death (ages 15-19)	0.0/100,000 teens 15-19, 1994-96					###	144.9/100,000 teens 15-19, 2003-05	62
Child & Teen Death (ages 1-19)	0.0/100,000 youth 1-19, 1994-96					###	128.2/100,000 youth 1-19, 2003-05	72
<b>ECONOMIC CLUSTER</b>								
	79 Economic Index, 1994-96	-24.1%					98 Economic Index, 2003-05	21

■ state change

■ county change

### = zero base - cannot calculate change

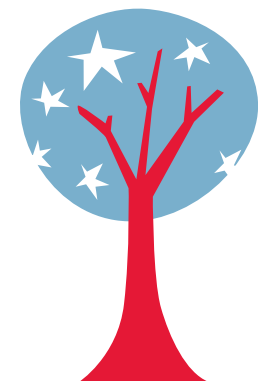
County Rank (1 = best) (77 = worst)

Changes of more than 100%—positive or negative—are graphed with broken bar

\*Indicates a tie with at least one other county.

## CHILDHOOD STRESS INDEX

Category / Indicator	Number	Rate	Rank
<b>BIRTH / GENETIC / BIOLOGICAL</b>			
Very Low Birthweight (2003-05)	0 avg annual	0.0%	1*
Autism Reported on IEPs (ages 3-21, FFY 2005-07)	0 avg annual	0.4/1,000	3
<b>ENVIRONMENTAL FACTORS</b>			
Poverty (ages 0-17, 2004)	134	19.0%	27
Unemployment (2003-05)	n/a	3.2%	10
<b>EXPOSURE TO TRAUMA</b>			
FEMA Disaster Declarations (Nov 2000-Aug 2007)	6	0.1/1,000 children	4
Adverse Childhood Experiences (ACE Index, 2006/07 Kids Count)	2.7	n/a	1
<b>ACCESS TO TREATMENT</b>			
Untreated by DMHSAS, OJA or Medicaid (ages 9-17, FY 2005-06)			
Untreated Mentally Ill & Substance-Abusers	69 avg annual	87.4%	76*
Untreated Serious Emotional Disturbance	39 avg annual	79.7%	
Suicide (ages 5-24, 2003-05)	0 avg annual	0.0/100,000	1*



Childhood Stress Rank

**1**

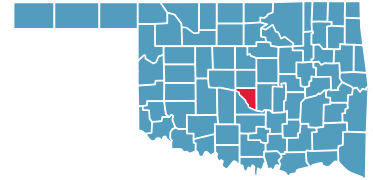
\*Indicates a tie with at least one other county.

0.0%\* or 0\* indicates that, on average, services were provided to numbers of young clients which appear to serve all of the estimated need (prevalence) in the county



# CLEVELAND COUNTY

County Seat: **Norman**



Number of Children (2005): **48,551**

Number of Poor Children (2004): **5,819**

Children are **21.6%** of the county population

Child Poverty Rate: **12.0%**

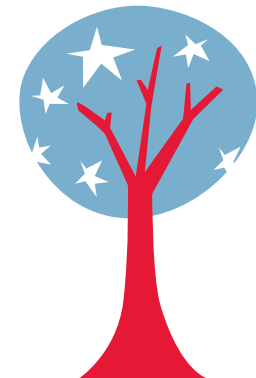
Economic Cluster: **#1, Wealthiest**

Indicator	Base Data	-	Worsened	Improved	+	Recent Data	Rank
<b>BIRTHWEIGHT</b>							
Low Birthweight (<5.5lbs)	6.0% of live births, 1994-96	-11.2%				6.6% of live births, 2003-05	17
Very Low Birthweight (<3 lbs, 5oz)	0.9% of live births, 1994-96	-6.0%				1.0% of live births, 2003-05	28
<b>BIRTHS TO TEENS</b>							
Births to Young Teens (ages 15-17)	21.8/1,000 girls 15-17, 1994-96					14.1/1,000 girls 15-17, 2003-05	7
Births to Older Teens (ages 18-19)	41.9/1,000 girls 18-19, 1994-96					37.7/1,000 girls 18-19, 2003-05	2
Births to Teens (ages 15-19)	31.5/1,000 girls 15-19, 1994-96					25.5/1,000 girls 15-19, 2003-05	2
<b>CHILD ABUSE &amp; NEGLECT</b>							
	11.2 confirmed/1,000 children, FY 1995-97					8.7 confirmed/1,000 children, FY 2004-06	6
<b>HIGH SCHOOL DROPOUTS</b>							
	3.7% youth <age 19, SY 2001/02-2003/04					2.4% youth <age 19, SY 2003/04-2005/06	35
<b>VIOLENT CRIME ARRESTS</b>							
	137.9/100,000 youths 10-17, 1994-96					89.3/100,000 youths 10-17, 2003-05	25
<b>MORTALITY</b>							
Infant Mortality (<age 1)	5.7/1,000 live births, 1994-96	-4.2%				5.9/1,000 live births, 2003-05	26
Child Death (ages 1-14)	27.1/100,000 children 1-14, 1994-96					22.1/100,000 children 1-14, 2003-05	25
Teen Death (ages 15-19)	54.2/100,000 teens 15-19, 1994-96	-29.8%				70.3/100,000 teens 15-19, 2003-05	28
Child & Teen Death (ages 1-19)	35.1/100,000 youth 1-19, 1994-96	-6.4%				37.4/100,000 youth 1-19, 2003-05	22
<b>ECONOMIC CLUSTER</b>							
	40 Economic Index, 1994-96	-55.0%				62 Economic Index, 2003-05	10

■ state change    ■ county change    ### = zero base - cannot calculate change    County Rank (1 = best) (77 = worst)  
 Changes of more than 100%—positive or negative—are graphed with broken bar    \*Indicates a tie with at least one other county.

## CHILDHOOD STRESS INDEX

Category / Indicator	Number	Rate	Rank
<b>BIRTH / GENETIC / BIOLOGICAL</b>			
Very Low Birthweight (2003-05)	26 avg annual	1.0%	28
Autism Reported on IEPs (ages 3-21, FFY 2005-07)	117 avg annual	2.0/1,000	61
<b>ENVIRONMENTAL FACTORS</b>			
Poverty (ages 0-17, 2004)	5,819	12.0%	2
Unemployment (2003-05)	n/a	3.6%	17
<b>EXPOSURE TO TRAUMA</b>			
FEMA Disaster Declarations (Nov 2000-Aug 2007)	9	5.4/1,000 children	75
Adverse Childhood Experiences (ACE Index, 2006/07 Kids Count)	23.3	n/a	13
<b>ACCESS TO TREATMENT</b>			
Untreated by DMHSAS, OJA or Medicaid (ages 9-17, FY 2005-06)			
Untreated Mentally Ill & Substance-Abusers	3,673 avg annual	69.4%	66
Untreated Serious Emotional Disturbance	1,778 avg annual	54.0%	
Suicide (ages 5-24, 2003-05)	4 avg annual	5.2/100,000	37



Childhood Stress Rank

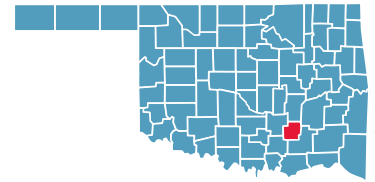
**tie for 20**

\*Indicates a tie with at least one other county.

0.0%\* or 0\* indicates that, on average, services were provided to numbers of young clients which appear to serve all of the estimated need (prevalence) in the county

# COAL COUNTY

County Seat: **Coalgate**



Number of Children (2005): **1,405**

Number of Poor Children (2004): **360**

Children are **24.5%** of the county population

Child Poverty Rate: **25.9%**

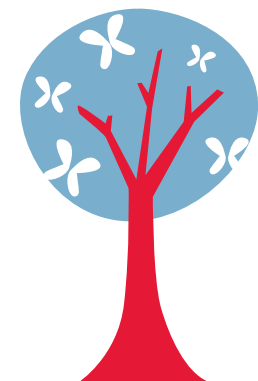
Economic Cluster: **#5, Poorest**

Indicator	Base Data	-	Worsened	Improved	+	Recent Data	Rank
<b>BIRTHWEIGHT</b>							
Low Birthweight (<5.5lbs)	6.5% of live births, 1994-96	-18.6%				7.7% of live births, 2003-05	41
Very Low Birthweight (<3 lbs, 5oz)	1.7% of live births, 1994-96				40.7%	1.0% of live births, 2003-05	32
<b>BIRTHS TO TEENS</b>							
Births to Young Teens (ages 15-17)	30.9/1,000 girls 15-17, 1994-96				57.7%	13.1/1,000 girls 15-17, 2003-05	4
Births to Older Teens (ages 18-19)	139.9/1,000 girls 18-19, 1994-96				36.4%	89.0/1,000 girls 18-19, 2003-05	25
Births to Teens (ages 15-19)	67.2/1,000 girls 15-19, 1994-96				37.5%	42.0/1,000 girls 15-19, 2003-05	19
<b>CHILD ABUSE &amp; NEGLECT</b>	21.0 confirmed/1,000 children, FY 1995-97	-102.3%				42.5 confirmed/1,000 children, FY 2004-06	77
<b>HIGH SCHOOL DROPOUTS</b>	2.1% youth <age 19, SY 2001/02-2003/04				21.8%	1.6% youth <age 19, SY 2003/04-2005/06	18
<b>VIOLENT CRIME ARRESTS</b>	0.0/100,000 youths 10-17, 1994-96				###	0.0/100,000 youths 10-17, 2003-05	1*
<b>MORTALITY</b>							
Infant Mortality (<age 1)	13.0/1,000 live births, 1994-96	-58.1%				20.6/1,000 live births, 2003-05	77
Child Death (ages 1-14)	54.0/100,000 children 1-14, 1994-96				45.8%	29.2/100,000 children 1-14, 2003-05	39
Teen Death (ages 15-19)	68.7/100,000 teens 15-19, 1994-96	-14.4%				78.6/100,000 teens 15-19, 2003-05	31
Child & Teen Death (ages 1-19)	58.1/100,000 youth 1-19, 1994-96				26.7%	42.6/100,000 youth 1-19, 2003-05	29
<b>ECONOMIC CLUSTER</b>	261 Economic Index, 1994-96	-6.5%				278 Economic Index, 2003-05	74

■ state change    ■ county change    ### = zero base - cannot calculate change    County Rank (1 = best) (77 = worst)  
 Changes of more than 100%—positive or negative—are graphed with broken bar    \*Indicates a tie with at least one other county.

## CHILDHOOD STRESS INDEX

Category / Indicator	Number	Rate	Rank
<b>BIRTH / GENETIC / BIOLOGICAL</b>			
Very Low Birthweight (2003-05)	1 avg annual	1.0%	32
Autism Reported on IEPs (ages 3-21, FFY 2005-07)	1 avg annual	0.7/1,000	11
<b>ENVIRONMENTAL FACTORS</b>			
Poverty (ages 0-17, 2004)	360	25.9%	61*
Unemployment (2003-05)	n/a	11.5%	77
<b>EXPOSURE TO TRAUMA</b>			
FEMA Disaster Declarations (Nov 2000-Aug 2007)	8	0.2/1,000 children	11
Adverse Childhood Experiences (ACE Index, 2006/07 Kids Count)	61.6	n/a	77
<b>ACCESS TO TREATMENT</b>			
Untreated by DMHSAS, OJA or Medicaid (ages 9-17, FY 2005-06)			
Untreated Mentally Ill & Substance-Abusers	4 avg annual	2.7%	1
Untreated Serious Emotional Disturbance	0* avg annual	0.0%*	
Suicide (ages 5-24, 2003-05)	0 avg annual	0.0/100,000	1*



Childhood Stress Rank

**43**

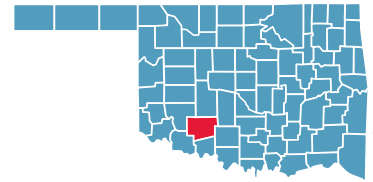
\*Indicates a tie with at least one other county.

0.0%\* or 0\* indicates that, on average, services were provided to numbers of young clients which appear to serve all of the estimated need (prevalence) in the county



# COMANCHE COUNTY

County Seat: Lawton



Number of Children (2005): **31,169**

Number of Poor Children (2004): **6,383**

Children are **27.7%** of the county population

Child Poverty Rate: **20.7%**

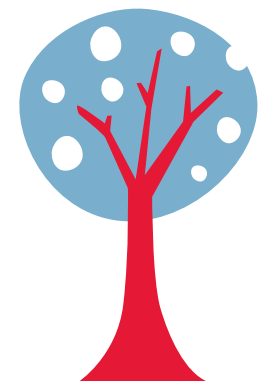
Economic Cluster: **#3, Middle**

Indicator	Base Data	-	Worsened	Improved	+	Recent Data	Rank
<b>BIRTHWEIGHT</b>							
Low Birthweight (<5.5lbs)	7.8% of live births, 1994-96	-18.6%				9.2% of live births, 2003-05	70
Very Low Birthweight (<3 lbs, 5oz)	1.5% of live births, 1994-96				28.2%	1.1% of live births, 2003-05	33
<b>BIRTHS TO TEENS</b>							
Births to Young Teens (ages 15-17)	44.5/1,000 girls 15-17, 1994-96				33.0%	29.8/1,000 girls 15-17, 2003-05	44
Births to Older Teens (ages 18-19)	141.8/1,000 girls 18-19, 1994-96				14.9%	120.7/1,000 girls 18-19, 2003-05	61
Births to Teens (ages 15-19)	83.2/1,000 girls 15-19, 1994-96				20.5%	66.2/1,000 girls 15-19, 2003-05	56
<b>CHILD ABUSE &amp; NEGLECT</b>	9.4 confirmed/1,000 children, FY 1995-97	-16.9%				11.0 confirmed/1,000 children, FY 2004-06	15
<b>HIGH SCHOOL DROPOUTS</b>	3.8% youth <age 19, SY 2001/02-2003/04				17.9%	3.1% youth <age 19, SY 2003/04-2005/06	46
<b>VIOLENT CRIME ARRESTS</b>	535.9/100,000 youths 10-17, 1994-96				54.5%	243.8/100,000 youths 10-17, 2003-05	70
<b>MORTALITY</b>							
Infant Mortality (<age 1)	9.1/1,000 live births, 1994-96				37.6%	5.7/1,000 live births, 2003-05	24
Child Death (ages 1-14)	29.8/100,000 children 1-14, 1994-96				17.4%	24.6/100,000 children 1-14, 2003-05	30
Teen Death (ages 15-19)	67.3/100,000 teens 15-19, 1994-96				35.8%	43.2/100,000 teens 15-19, 2003-05	10
Child & Teen Death (ages 1-19)	39.5/100,000 youth 1-19, 1994-96				24.6%	29.8/100,000 youth 1-19, 2003-05	11
<b>ECONOMIC CLUSTER</b>	164 Economic Index, 1994-96				24.4%	124 Economic Index, 2003-05	28

■ state change    ■ county change    ### = zero base - cannot calculate change    County Rank (1 = best) (77 = worst)  
 Changes of more than 100%—positive or negative—are graphed with broken bar    \*Indicates a tie with at least one other county.

## CHILDHOOD STRESS INDEX

Category / Indicator	Number	Rate	Rank
<b>BIRTH / GENETIC / BIOLOGICAL</b>			
Very Low Birthweight (2003-05)	20 avg annual	1.1%	33
Autism Reported on IEPs (ages 3-21, FFY 2005-07)	165 avg annual	4.8/1,000	77
<b>ENVIRONMENTAL FACTORS</b>			
Poverty (ages 0-17, 2004)	6,383	20.7%	36
Unemployment (2003-05)	n/a	4.3%	26
<b>EXPOSURE TO TRAUMA</b>			
FEMA Disaster Declarations (Nov 2000-Aug 2007)	11	2.8/1,000 children	73
Adverse Childhood Experiences (ACE Index, 2006/07 Kids Count)	32.2	n/a	37
<b>ACCESS TO TREATMENT</b>			
Untreated by DMHSAS, OJA or Medicaid (ages 9-17, FY 2005-06)			
Untreated Mentally Ill & Substance-Abusers	2,050 avg annual	65.4%	53
Untreated Serious Emotional Disturbance	894 avg annual	45.8%	
Suicide (ages 5-24, 2003-05)	2 avg annual	5.6/100,000	39



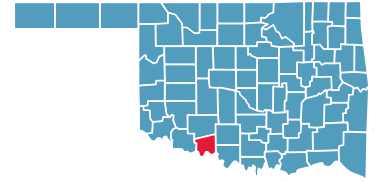
Childhood Stress Rank

**70**

\*Indicates a tie with at least one other county.  
 0.0%\* or 0\* indicates that, on average, services were provided to numbers of young clients which appear to serve all of the estimated need (prevalence) in the county

# COTTON COUNTY

County Seat: **Walters**



Number of Children (2005): **1,537**

Number of Poor Children (2004): **289**

Children are **23.3%** of the county population

Child Poverty Rate: **18.8%**

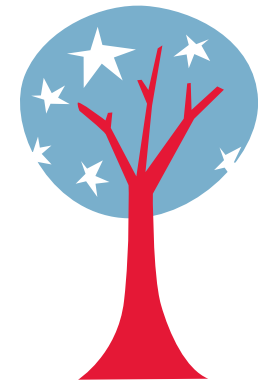
Economic Cluster: **#2, Wealthier**

Indicator	Base Data	-	Worsened	Improved	+	Recent Data	Rank
<b>BIRTHWEIGHT</b>							
Low Birthweight (<5.5lbs)	5.7% of live births, 1994-96	-36.9%				7.8% of live births, 2003-05	43
Very Low Birthweight (<3 lbs, 5oz)	1.2% of live births, 1994-96				29.0%	0.9% of live births, 2003-05	20
<b>BIRTHS TO TEENS</b>							
Births to Young Teens (ages 15-17)	35.9/1,000 girls 15-17, 1994-96				43.9%	20.2/1,000 girls 15-17, 2003-05	22
Births to Older Teens (ages 18-19)	131.6/1,000 girls 18-19, 1994-96	-3.8%				136.6/1,000 girls 18-19, 2003-05	69
Births to Teens (ages 15-19)	65.8/1,000 girls 15-19, 1994-96				5.1%	62.5/1,000 girls 15-19, 2003-05	48
<b>CHILD ABUSE &amp; NEGLECT</b>	8.9 confirmed/1,000 children, FY 1995-97	-184.1%				25.2 confirmed/1,000 children, FY 2004-06	62
<b>HIGH SCHOOL DROPOUTS</b>	1.2% youth <age 19, SY 2001/02-2003/04	-1.8%				1.2% youth <age 19, SY 2003/04-2005/06	10
<b>VIOLENT CRIME ARRESTS</b>	210.8/100,000 youths 10-17, 1994-96				36.1%	134.7/100,000 youths 10-17, 2003-05	45
<b>MORTALITY</b>							
Infant Mortality (<age 1)	12.1/1,000 live births, 1994-96				64.5%	4.3/1,000 live births, 2003-05	13*
Child Death (ages 1-14)	24.4/100,000 children 1-14, 1994-96				100.0%	0.0/100,000 children 1-14, 2003-05	1*
Teen Death (ages 15-19)	206.6/100,000 teens 15-19, 1994-96	-49.6%				309.1/100,000 teens 15-19, 2003-05	74
Child & Teen Death (ages 1-19)	72.0/100,000 youth 1-19, 1994-96	-13.0%				81.4/100,000 youth 1-19, 2003-05	69
<b>ECONOMIC CLUSTER</b>	170 Economic Index, 1994-96				46.5%	91 Economic Index, 2003-05	19*

■ state change    ■ county change    ### = zero base - cannot calculate change    County Rank (1 = best) (77 = worst)  
 Changes of more than 100%—positive or negative—are graphed with broken bar    \*Indicates a tie with at least one other county.

## CHILDHOOD STRESS INDEX

Category / Indicator	Number	Rate	Rank
<b>BIRTH / GENETIC / BIOLOGICAL</b>			
Very Low Birthweight (2003-05)	1 avg annual	0.9%	20
Autism Reported on IEPs (ages 3-21, FFY 2005-07)	3 avg annual	1.9/1,000	53
<b>ENVIRONMENTAL FACTORS</b>			
Poverty (ages 0-17, 2004)	289	18.8%	25*
Unemployment (2003-05)	n/a	4.1%	25
<b>EXPOSURE TO TRAUMA</b>			
FEMA Disaster Declarations (Nov 2000-Aug 2007)	12	0.1/1,000 children	5
Adverse Childhood Experiences (ACE Index, 2006/07 Kids Count)	38.5	n/a	49
<b>ACCESS TO TREATMENT</b>			
Untreated by DMHSAS, OJA or Medicaid (ages 9-17, FY 2005-06)			
Untreated Mentally Ill & Substance-Abusers	113 avg annual	66.5%	59
Untreated Serious Emotional Disturbance	53 avg annual	50.4%	
Suicide (ages 5-24, 2003-05)	0 avg annual	19.2/100,000	73



Childhood Stress Rank

**tie for 20**

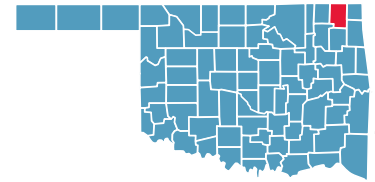
\*Indicates a tie with at least one other county.

0.0%\* or 0\* indicates that, on average, services were provided to numbers of young clients which appear to serve all of the estimated need (prevalence) in the county



# CRAIG COUNTY

County Seat: Vinita



Number of Children (2005): 3,415

Number of Poor Children (2004): 731

Children are 22.6% of the county population

Child Poverty Rate: 21.4%

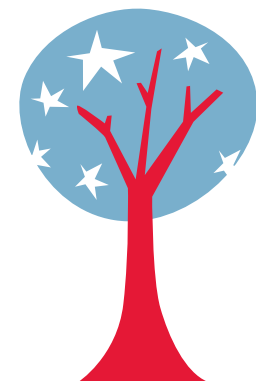
Economic Cluster: #5, Poorest

Indicator	Base Data	-	Worsened	Improved	+	Recent Data	Rank
<b>BIRTHWEIGHT</b>							
Low Birthweight (<5.5lbs)	7.0% of live births, 1994-96	-26.9%				8.9% of live births, 2003-05	66
Very Low Birthweight (<3 lbs, 5oz)	2.0% of live births, 1994-96				46.7%	1.1% of live births, 2003-05	35
<b>BIRTHS TO TEENS</b>							
Births to Young Teens (ages 15-17)	32.0/1,000 girls 15-17, 1994-96				11.8%	28.2/1,000 girls 15-17, 2003-05	41
Births to Older Teens (ages 18-19)	138.0/1,000 girls 18-19, 1994-96				0.6%	137.2/1,000 girls 18-19, 2003-05	71
Births to Teens (ages 15-19)	68.2/1,000 girls 15-19, 1994-96				1.5%	67.2/1,000 girls 15-19, 2003-05	58
<b>CHILD ABUSE &amp; NEGLECT</b>	8.8 confirmed/1,000 children, FY 1995-97	-98.7%				17.6 confirmed/1,000 children, FY 2004-06	41
<b>HIGH SCHOOL DROPOUTS</b>	2.4% youth <age 19, SY 2001/02-2003/04				22.2%	1.9% youth <age 19, SY 2003/04-2005/06	24
<b>VIOLENT CRIME ARRESTS</b>	126.3/100,000 youths 10-17, 1994-96	-31.0%				165.5/100,000 youths 10-17, 2003-05	56
<b>MORTALITY</b>							
Infant Mortality (<age 1)	14.0/1,000 live births, 1994-96				36.6%	8.9/1,000 live births, 2003-05	53
Child Death (ages 1-14)	39.3/100,000 children 1-14, 1994-96				1.5%	38.7/100,000 children 1-14, 2003-05	54
Teen Death (ages 15-19)	134.1/100,000 teens 15-19, 1994-96				75.6%	32.7/100,000 teens 15-19, 2003-05	7
Child & Teen Death (ages 1-19)	65.9/100,000 youth 1-19, 1994-96				43.9%	37.0/100,000 youth 1-19, 2003-05	20
<b>ECONOMIC CLUSTER</b>	113 Economic Index, 1994-96	-54.0%				174 Economic Index, 2003-05	47

■ state change    ■ county change    ### = zero base - cannot calculate change    County Rank (1 = best) (77 = worst)  
 Changes of more than 100%—positive or negative—are graphed with broken bar    \*Indicates a tie with at least one other county.

## CHILDHOOD STRESS INDEX

Category / Indicator	Number	Rate	Rank
<b>BIRTH / GENETIC / BIOLOGICAL</b>			
Very Low Birthweight (2003-05)	2 avg annual	1.1%	35
Autism Reported on IEPs (ages 3-21, FFY 2005-07)	7 avg annual	2.1/1,000	63
<b>ENVIRONMENTAL FACTORS</b>			
Poverty (ages 0-17, 2004)	731	21.4%	41
Unemployment (2003-05)	n/a	4.8%	40*
<b>EXPOSURE TO TRAUMA</b>			
FEMA Disaster Declarations (Nov 2000-Aug 2007)	5	0.7/1,000 children	41*
Adverse Childhood Experiences (ACE Index, 2006/07 Kids Count)	30.1	n/a	27
<b>ACCESS TO TREATMENT</b>			
Untreated by DMHSAS, OJA or Medicaid (ages 9-17, FY 2005-06)			
Untreated Mentally Ill & Substance-Abusers	167 avg annual	45.9%	16
Untreated Serious Emotional Disturbance	33 avg annual	14.6%	
Suicide (ages 5-24, 2003-05)	0 avg annual	0.0/100,000	1*



Childhood Stress Rank

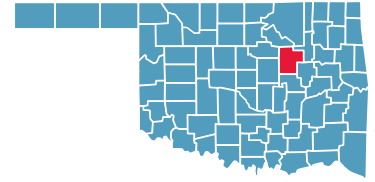
22

\*Indicates a tie with at least one other county.  
 0.0%\* or 0\* indicates that, on average, services were provided to numbers of young clients which appear to serve all of the estimated need (prevalence) in the county



# CREEK COUNTY

County Seat: Sapulpa



Number of Children (2005): 16,664

Number of Poor Children (2004): 3,077

Children are 24.3% of the county population

Child Poverty Rate: 18.6%

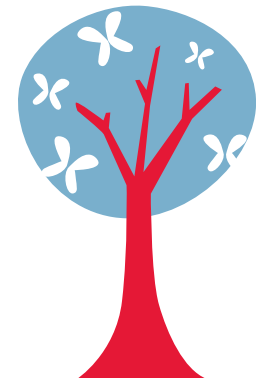
Economic Cluster: #3, Middle

Indicator	Base Data	-	Worsened	Improved	+	Recent Data	Rank
<b>BIRTHWEIGHT</b>							
Low Birthweight (<5.5lbs)	6.7% of live births, 1994-96	-29.1%				8.6% of live births, 2003-05	62
Very Low Birthweight (<3 lbs, 5oz)	1.0% of live births, 1994-96	-54.8%				1.6% of live births, 2003-05	65
<b>BIRTHS TO TEENS</b>							
Births to Young Teens (ages 15-17)	36.9/1,000 girls 15-17, 1994-96				32.8%	24.8/1,000 girls 15-17, 2003-05	34
Births to Older Teens (ages 18-19)	128.7/1,000 girls 18-19, 1994-96				22.8%	99.3/1,000 girls 18-19, 2003-05	32
Births to Teens (ages 15-19)	66.7/1,000 girls 15-19, 1994-96				21.7%	52.2/1,000 girls 15-19, 2003-05	31
<b>CHILD ABUSE &amp; NEGLECT</b>							
	10.6 confirmed/1,000 children, FY 1995-97	-9.7%				11.6 confirmed/1,000 children, FY 2004-06	18
<b>HIGH SCHOOL DROPOUTS</b>							
	2.5% youth <age 19, SY 2001/02-2003/04				10.2%	2.3% youth <age 19, SY 2003/04-2005/06	30
<b>VIOLENT CRIME ARRESTS</b>							
	270.0/100,000 youths 10-17, 1994-96				46.5%	144.5/100,000 youths 10-17, 2003-05	48
<b>MORTALITY</b>							
Infant Mortality (<age 1)	5.8/1,000 live births, 1994-96	-23.2%				7.1/1,000 live births, 2003-05	38
Child Death (ages 1-14)	34.2/100,000 children 1-14, 1994-96				17.7%	28.1/100,000 children 1-14, 2003-05	35
Teen Death (ages 15-19)	153.7/100,000 teens 15-19, 1994-96				40.3%	91.7/100,000 teens 15-19, 2003-05	42
Child & Teen Death (ages 1-19)	66.2/100,000 youth 1-19, 1994-96				30.5%	46.0/100,000 youth 1-19, 2003-05	35
<b>ECONOMIC CLUSTER</b>							
	126 Economic Index, 1994-96	-1.6%				128 Economic Index, 2003-05	30

■ state change    ■ county change    ### = zero base - cannot calculate change    County Rank (1 = best) (77 = worst)  
 Changes of more than 100%—positive or negative—are graphed with broken bar    \*Indicates a tie with at least one other county.

## CHILDHOOD STRESS INDEX

Category / Indicator	Number	Rate	Rank
<b>BIRTH / GENETIC / BIOLOGICAL</b>			
Very Low Birthweight (2003-05)	14 avg annual	1.6%	65
Autism Reported on IEPs (ages 3-21, FFY 2005-07)	33 avg annual	1.9/1,000	54
<b>ENVIRONMENTAL FACTORS</b>			
Poverty (ages 0-17, 2004)	3,077	18.6%	23
Unemployment (2003-05)	n/a	6.2%	62
<b>EXPOSURE TO TRAUMA</b>			
FEMA Disaster Declarations (Nov 2000-Aug 2007)	7	2.4/1,000 children	72
Adverse Childhood Experiences (ACE Index, 2006/07 Kids Count)	24.3	n/a	15
<b>ACCESS TO TREATMENT</b>			
Untreated by DMHSAS, OJA or Medicaid (ages 9-17, FY 2005-06)			
Untreated Mentally Ill & Substance-Abusers	1,100 avg annual	58.9%	40
Untreated Serious Emotional Disturbance	409 avg annual	35.2%	
Suicide (ages 5-24, 2003-05)	2 avg annual	9.0/100,000	52



Childhood Stress Rank

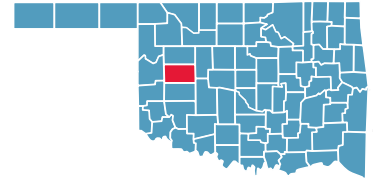
**tie for 47**

\*Indicates a tie with at least one other county.

0.0%\* or 0\* indicates that, on average, services were provided to numbers of young clients which appear to serve all of the estimated need (prevalence) in the county

# CUSTER COUNTY

County Seat: **Arapaho**



Number of Children (2005): **5,464**

Number of Poor Children (2004): **1,141**

Children are **21.7%** of the county population

Child Poverty Rate: **20.9%**

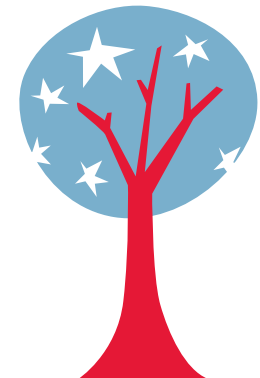
Economic Cluster: **#3, Middle**

Indicator	Base Data	-	Worsened	Improved	+	Recent Data	Rank	
<b>BIRTHWEIGHT</b>								
Low Birthweight (<5.5lbs)	5.7% of live births, 1994-96	-13.2%				6.4% of live births, 2003-05	14	
Very Low Birthweight (<3 lbs, 5oz)	0.4% of live births, 1994-96	-108.1%				0.8% of live births, 2003-05	18	
<b>BIRTHS TO TEENS</b>								
Births to Young Teens (ages 15-17)	34.4/1,000 girls 15-17, 1994-96					9.1%	31.3/1,000 girls 15-17, 2003-05	51
Births to Older Teens (ages 18-19)	49.3/1,000 girls 18-19, 1994-96	-27.3%					62.7/1,000 girls 18-19, 2003-05	10
Births to Teens (ages 15-19)	42.6/1,000 girls 15-19, 1994-96	-14.3%					48.7/1,000 girls 15-19, 2003-05	23
<b>CHILD ABUSE &amp; NEGLECT</b>								
	18.2 confirmed/1,000 children, FY 1995-97					1.8%	17.9 confirmed/1,000 children, FY 2004-06	43
<b>HIGH SCHOOL DROPOUTS</b>								
	3.2% youth <age 19, SY 2001/02-2003/04	-0.2%					3.3% youth <age 19, SY 2003/04-2005/06	49
<b>VIOLENT CRIME ARRESTS</b>								
	212.0/100,000 youths 10-17, 1994-96					17.0%	175.9/100,000 youths 10-17, 2003-05	59
<b>MORTALITY</b>								
Infant Mortality (<age 1)	7.8/1,000 live births, 1994-96					53.8%	3.6/1,000 live births, 2003-05	10
Child Death (ages 1-14)	6.0/100,000 children 1-14, 1994-96	-295.4%					23.7/100,000 children 1-14, 2003-05	28
Teen Death (ages 15-19)	83.7/100,000 teens 15-19, 1994-96	-51.8%					127.1/100,000 teens 15-19, 2003-05	55
Child & Teen Death (ages 1-19)	29.3/100,000 youth 1-19, 1994-96	-97.8%					58.0/100,000 youth 1-19, 2003-05	46
<b>ECONOMIC CLUSTER</b>								
	126 Economic Index, 1994-96	-10.3%					139 Economic Index, 2003-05	32*

■ state change    ■ county change    ### = zero base - cannot calculate change    County Rank (1 = best) (77 = worst)  
 Changes of more than 100%—positive or negative—are graphed with broken bar    \*Indicates a tie with at least one other county.

## CHILDHOOD STRESS INDEX

Category / Indicator	Number	Rate	Rank
<b>BIRTH / GENETIC / BIOLOGICAL</b>			
Very Low Birthweight (2003-05)	3 avg annual	0.8%	18
Autism Reported on IEPs (ages 3-21, FFY 2005-07)	16 avg annual	2.2/1,000	67
<b>ENVIRONMENTAL FACTORS</b>			
Poverty (ages 0-17, 2004)	1,141	20.9%	37
Unemployment (2003-05)	n/a	3.3%	11
<b>EXPOSURE TO TRAUMA</b>			
FEMA Disaster Declarations (Nov 2000-Aug 2007)	8	0.7/1,000 children	41*
Adverse Childhood Experiences (ACE Index, 2006/07 Kids Count)	32.0	n/a	35
<b>ACCESS TO TREATMENT</b>			
Untreated by DMHSAS, OJA or Medicaid (ages 9-17, FY 2005-06)			
Untreated Mentally Ill & Substance-Abusers	172 avg annual	31.3%	8
Untreated Serious Emotional Disturbance	0* avg annual	0.0%*	
Suicide (ages 5-24, 2003-05)	0 avg annual	0.0/100,000	1*



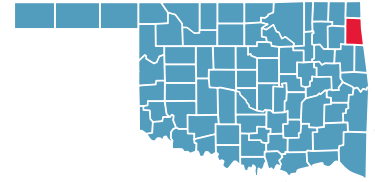
Childhood Stress Rank

**18**

\*Indicates a tie with at least one other county.  
 0.0%\* or 0\* indicates that, on average, services were provided to numbers of young clients which appear to serve all of the estimated need (prevalence) in the county

# DELAWARE COUNTY

County Seat: Jay



Number of Children (2005): 8,661

Number of Poor Children (2004): 2,088

Children are 22.1% of the county population

Child Poverty Rate: 24.4%

Economic Cluster: #4, Poorer

Indicator	Base Data	-	Worsened	Improved	+	Recent Data	Rank
<b>BIRTHWEIGHT</b>							
Low Birthweight (<5.5lbs)	8.4% of live births, 1994-96					8.5%	7.7% of live births, 2003-05 39
Very Low Birthweight (<3 lbs, 5oz)	1.7% of live births, 1994-96					29.6%	1.2% of live births, 2003-05 46
<b>BIRTHS TO TEENS</b>							
Births to Young Teens (ages 15-17)	38.1/1,000 girls 15-17, 1994-96					20.2%	30.4/1,000 girls 15-17, 2003-05 46
Births to Older Teens (ages 18-19)	158.6/1,000 girls 18-19, 1994-96					26.1%	117.3/1,000 girls 18-19, 2003-05 54
Births to Teens (ages 15-19)	78.3/1,000 girls 15-19, 1994-96					19.9%	62.7/1,000 girls 15-19, 2003-05 49
<b>CHILD ABUSE &amp; NEGLECT</b>	7.4 confirmed/1,000 children, FY 1995-97	-162.4					19.5 confirmed/1,000 children, FY 2004-06 49
<b>HIGH SCHOOL DROPOUTS</b>	4.4% youth <age 19, SY 2001/02-2003/04	-14.4%					5.1% youth <age 19, SY 2003/04-2005/06 74
<b>VIOLENT CRIME ARRESTS</b>	9.8/100,000 youths 10-17, 1994-96	-1242.6%					131.9/100,000 youths 10-17, 2003-05 44
<b>MORTALITY</b>							
Infant Mortality (<age 1)	7.5/1,000 live births, 1994-96					12.0%	6.6/1,000 live births, 2003-05 30
Child Death (ages 1-14)	28.1/100,000 children 1-14, 1994-96					47.5%	14.7/100,000 children 1-14, 2003-05 11
Teen Death (ages 15-19)	89.7/100,000 teens 15-19, 1994-96	-95.9%					175.7/100,000 teens 15-19, 2003-05 70
Child & Teen Death (ages 1-19)	44.9/100,000 youth 1-19, 1994-96	-33.6%					60.0/100,000 youth 1-19, 2003-05 52
<b>ECONOMIC CLUSTER</b>	157 Economic Index, 1994-96	-3.2%					162 Economic Index, 2003-05 44*

■ state change

■ county change

### = zero base - cannot calculate change

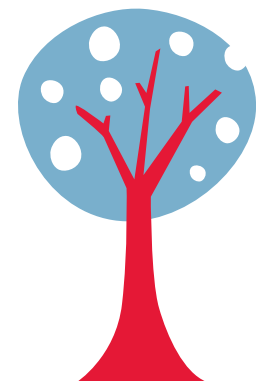
County Rank (1 = best) (77 = worst)

Changes of more than 100%—positive or negative—are graphed with broken bar

\*Indicates a tie with at least one other county.

## CHILDHOOD STRESS INDEX

Category / Indicator	Number	Rate	Rank
<b>BIRTH / GENETIC / BIOLOGICAL</b>			
Very Low Birthweight (2003-05)	5 avg annual	1.2%	46
Autism Reported on IEPs (ages 3-21, FFY 2005-07)	14 avg annual	1.5/1,000	41
<b>ENVIRONMENTAL FACTORS</b>			
Poverty (ages 0-17, 2004)	2,088	24.4%	52
Unemployment (2003-05)	n/a	4.7%	37*
<b>EXPOSURE TO TRAUMA</b>			
FEMA Disaster Declarations (Nov 2000-Aug 2007)	8	1.1/1,000 children	54
Adverse Childhood Experiences (ACE Index, 2006/07 Kids Count)	39.1	n/a	51
<b>ACCESS TO TREATMENT</b>			
Untreated by DMHSAS, OJA or Medicaid (ages 9-17, FY 2005-06)			
Untreated Mentally Ill & Substance-Abusers	573 avg annual	58.9%	39
Untreated Serious Emotional Disturbance	211 avg annual	34.8%	
Suicide (ages 5-24, 2003-05)	1 avg annual	6.8/100,000	45



Childhood Stress Rank

**tie for 61**

\*Indicates a tie with at least one other county.

0.0%\* or 0\* indicates that, on average, services were provided to numbers of young clients which appear to serve all of the estimated need (prevalence) in the county